

VITAL SIGNS

A QUARTERLY PUBLICATION FOR EMERGENCY HEALTHCARE WORKERS

JANUARY, 2014



01

- EMS Leadership Academies
- Featured Instructor

EMS LEADERSHIP ACADEMIES

Recognizing the critical importance of leadership and medical direction in the preparedness of rural emergency medical services (EMS) in South Dakota, the Office of Rural Health funded a development project in 2011. This project enabled 66 ambulance service and fire department leaders and managers from 46 ambulance services across South Dakota to participate in an EMS Leadership Academy. It also enabled 129 EMS medical directors to receive South Dakota-specific educational material on rural EMS medical direction.



The Office of Rural Health offered additional EMS Leadership Academies I and II for Ambulance Service Directors in 2012. These classes were offered in Sioux Falls and Rapid City with 56 ambulance service and fire department leaders and managers from 35 ambulance services across the state participating. During 2013, EMS Leadership Academies I, II, and III were offered in Sioux Falls. These classes provided training to 81 leaders from 40 ambulance services.

EMS Leadership Academies are being planned for the following 2014 dates: Level II—February 27-28; Level III—March 1-2; Level III—July 17-18; Level IV—July 19-20. To view the academy document, visit www.sim.sd.gov, click on *About* and click on [An Introduction to Rural EMS Medical Direction in South Dakota](#). To register for EMS Leadership Academies, visit <http://safetechsolutions.us/ems-leadership-academy/> or call SafeTech Solutions at (866) 611-5515.

FEATURED SIM-SD INSTRUCTOR JON BOHLEN, SANFORD HEALTH

Meet Jon Bohlen. Growing up in Milbank, SD, Jon began his career in EMS with his basic EMT certification in 2004. After getting his EMT, he attended college at SDSU while working part time in his home town as an EMT-B. In 2005, he attended paramedic school and graduated in 2006. After paramedic school, he worked as a paramedic and at-

tended college at the University of Sioux Falls to earn his Bachelors Degree in Paramedic Technology. He also holds several instructor certificates in EMS based courses. In 2009, he joined Sanford Intensive Air as a flight paramedic. Recently, he went part time as a flight paramedic and joined the office of EMS Outreach. He is currently in school

to obtain his nursing certification to become a better-rounded EMS educator.



02

- Improved Cardiac Care
- Featured Service



03

- Simulation in Motion-SD
- Simulators and New Scenarios



04

- Get SIM-SD in your Community
- More Information?

SD AWARDED \$3.7 MILLION GRANT FOR IMPROVED CARDIAC CARE

South Dakota has received \$3.7 million in funding over three years from The Leona M. and Harry B. Helmsley Charitable Trust to purchase lifesaving equipment that can increase survival rates from sudden cardiac arrest. "Sudden cardiac arrest is fatal for 95 percent of its victims and it's a leading cause of death in our country," said Governor Dennis Daugaard at a November 8, 2013 news conference announcing the award. "This grant will put the latest automatic chest compression equipment in every hospital and ambulance service in the state and help reduce those deaths."

When cardiac arrest occurs, the heart stops abruptly, the victim collapses and quickly loses consciousness. Death usually follows unless a normal heart rhythm is restored within minutes through cardiopulmonary resuscitation (CPR) and defibrillation, or electric shock to the heart. An automated chest compression device, or LUCAS® Chest Compression System, effectively and consistently delivers the necessary chest compressions, increasing the patient's chances of survival.

The project includes the necessary training for using the devices and it is being coordinated by Department of Health and the Department of Public Safety. The agencies will be collaborating with their counterparts in North Dakota who have also received funding from The Helmsley Trust to place the devices and train staff in hospitals and ambulance services across that state.

The Helmsley Charitable Trust aspires to improve lives by supporting effective nonprofits in a variety of selected areas. Since 2008, when the Trust began its active grant making, it has committed more than \$900 million to a wide range of charitable organizations. The Trust's Rural Healthcare Program funds innovative projects that use information technologies to connect rural patients to emergency medical care, bring the latest medical therapies to patients in remote areas, and provide state-of-the-art training for rural hospitals and EMS personnel. To date, the Helmsley Charitable Trusts Rural Healthcare Program has awarded more than \$186 million to organizations and initiatives in the upper Midwest states of South Dakota, North Dakota, Nebraska, Wyoming, Minnesota, Iowa, and Montana. For more information on the Trust, visit www.helmsleytrust.org. For more information on this project, contact Marty Link at (605) 367-5372 or via email at marty.link@state.sd.us.



Gov. Daugaard, (far right) announces the Cardiac Care grant. Looking on (l. to r.) are First Lady Linda Daugaard, Trevor Jones, Department of Public Safety, and Walter Panzirel, Helmsley Trust

FEATURED SERVICE CAMPBELL COUNTY AMBULANCE

Our Featured Service in this edition is the Campbell County Ambulance Service, a county owned service that's housed at the Fire Hall in Herreid, SD and covers the communities of Artas, Herreid, Mound City, Pollock, and the summer/vacation communities of Little Herreid and Little Leola along the banks of the Missouri River. "We are very fortunate to be staffed by 5 First Responders, 21 EMT-B's, 1 EMT-I, and 2 RN's, as many rural services find themselves very short-staffed. We have a core group of very dedicated

people and are glad to have gotten some new EMT's that live in Pollock, which is 16 miles from Herreid, who can provide some very important care until we arrive," stated Captain David Schaeffbauer. Campbell County Ambulance responded to 65 calls in 2013 and provides services to local community events, stand-by at football games, assistance at fire department structure calls, and teaches CPR and First Aid classes. Many of the EMT's are also fire fighters, and the Ambulance Service benefits from that cross-training.

"We've really enjoyed and benefitted from our training with the SIM-SD program. What a great way to bring real-life scenarios to our training and get immediate feedback on how our interventions and care can impact the outcome of a particular emergency," said Schaeffbauer.



SIMULATION IN MOTION—SOUTH DAKOTA (SIM-SD)

Many pre-hospital and hospital emergency care personnel in South Dakota only encounter a critically ill or injured patient once or twice a year. SIM-SD, a one-of-a-kind mobile education program, is designed to give providers the chance to encounter a similar 'patient' multiple times with focused feedback in a managed-stress environment.



SIM-SD 'patients' are some of the most technologically advanced training tools available to the medical community today. These 'patients' are human-like, computerized mannequins (human patient simulators). They are crucial in helping emergency care personnel improve their skills as providers, communicators and team members, which ultimately impacts patient care for all South Dakotans in a positive manner.

SIM-SD is proudly brought to you by a partnership between the South Dakota Department of Health, Avera Health, Mobridge Regional Hospital, Regional Health, Avera St. Mary's Hospital and Sanford Health. The Office of Rural Health in the Department of Health administers this statewide educational program.

SIMULATORS AND NEW SCENARIOS

The SIM-SD state-of-the-art human patient simulators are used to deliver hands-on SIM-SD education so that emergency care personnel can repeatedly practice their skills.

All SIM-SD partners have a variety of human patient simulators available for training purposes: an adult (**iStan**), a child (**PediaSIM**) and an infant (**BabySIM**). Scenario programming has been developed for each of the human patient simulators. This programming helps emergency care personnel better provide care in real emergency situations.



iStan is the most advanced wireless patient simulator on the market, with internal robotics that mimic human cardiovascular, respiratory and neurological systems. When iStan bleeds, his blood pressure, heart rate and other clinical

signs change automatically, and he responds to treatment with minimal input from an instructor. iStan has eleven programs available:

- Cardiac (2)
- Medical (3)
- Neurological
- Respiratory
- Trauma (4)



PediaSIM supports a wide range of clinical interventions and offers risk-free practice for pediatric clinical care. PediaSIM offers the integrated physiology in a smaller practice patient with full trauma features for both nursing and emergency response.

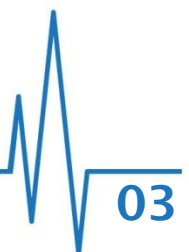


BabySIM is an infant-sized simulator with advanced physiology for the practice of life-saving care. BabySIM generates automatic responses to clinical interventions to prepare healthcare professionals for emergency and critical infant care in a low-risk setting.

PediaSIM and Baby SIM have the following programs available:

- Medical
- Trauma
- Respiratory
(Baby SIM has 2 Respiratory programs)

To schedule a training session or for more information about SIM-SD, please visit our website at www.sim.sd.gov.



VITALSIGNS



600 E. Capitol, Pierre, SD 57501

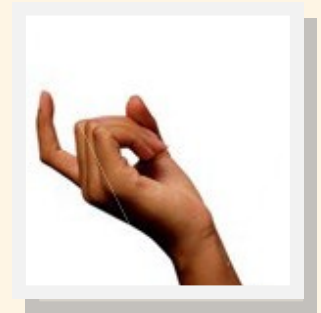
Presorted Standard
U.S. Postage Paid
Permit 24
Pierre S.D.



www.SIM.SD.gov

HOW DO WE GET SIM-SD IN OUR COMMUNITY?

SIM-SD's priority is to provide outreach training to local EMS and hospital personnel. If you have not yet been contacted by one of the SIM-SD partner sites and are interested in scheduling a SIM-SD training in your community, visit the SIM-SD website at www.sim.sd.gov. Click on the blue box that says "Schedule a Training Session" and fill out the request form. Please note the instructions at the top of the form and complete the form with as much detail as possible. Your request will then be forwarded to the appropriate SIM-SD partner for scheduling.



FOR MORE INFORMATION:

For more information on SIM-SD, please visit www.sim.sd.gov or contact the South Dakota Office of Rural Health at 605.773.3361.

